



*Etam*

PRIVATE



# PRIVATE

**ETAM, A HOUSE FOUNDED IN 1916, FUSES CORSETRY HERITAGE WITH CREATIVE AUDACITY THROUGH PRIVATE. A HIGH LINGERIE COLLECTION CRAFTED ALONGSIDE THE FINEST FRENCH ATELIERS.**

**FOR THESE EXCEPTIONAL PIECES, THE STUDIO HAS PARTNERED WITH ATELIERS RENOWNED FOR THEIR CRAFTSMANSHIP: SOPHIE HALLETTE, FORSTER ROHNER, JEAN BRACQ AND ART MARTIN.**

**LEAVERS LACE FROM CALAIS, BONDING TECHNIQUES, INLAID SEQUINS: PRIVATE PLAYS WITH CONTRASTS BETWEEN SHADOW AND LIGHT, FLUIDITY AND STRUCTURE, ACROSS SIX DISTINCT LINES.**

**BALCONETTES, TANGAS, SHORTS AND CORSETS, EACH METICULOUSLY CRAFTED TO CELEBRATE BOTH THE STRENGTH AND DELICACY OF THE FEMALE BODY.**







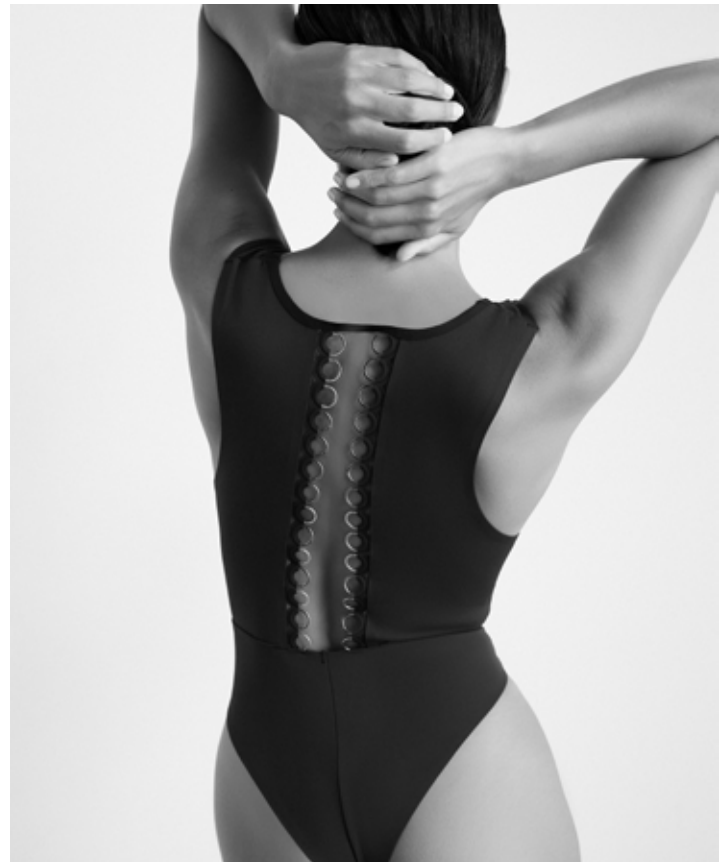






## AFTER PARTY

A REFINED FUSION OF TEXTILE AND METAL, BORN FROM A COLLABORATION WITH THE FRENCH MAISON ART MARTIN, AN EXPERT IN ORNAMENTAL JEWELRY SINCE 1856.





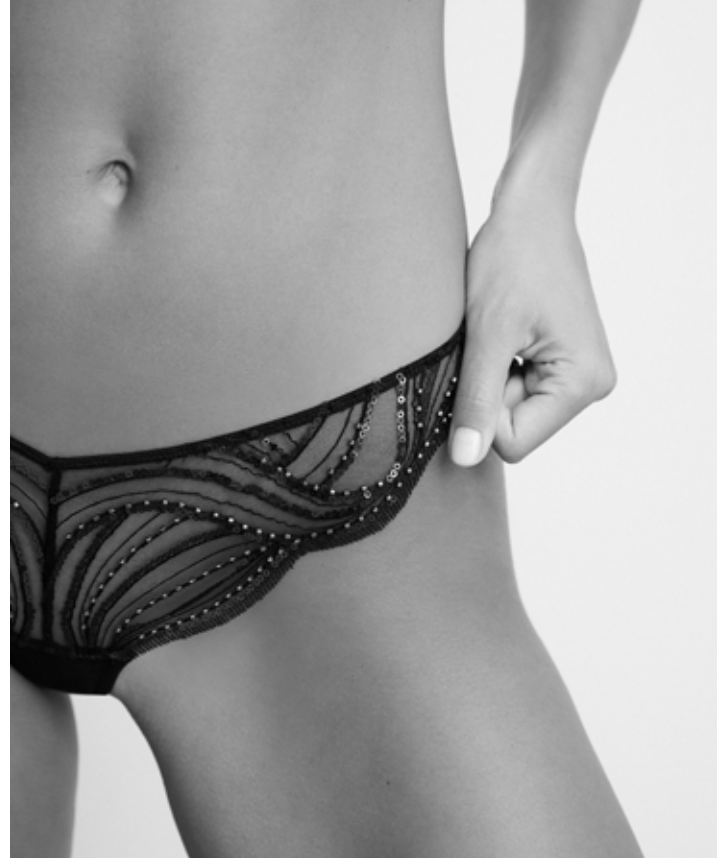


PRIVATE



## WHISPER OF DESIRE

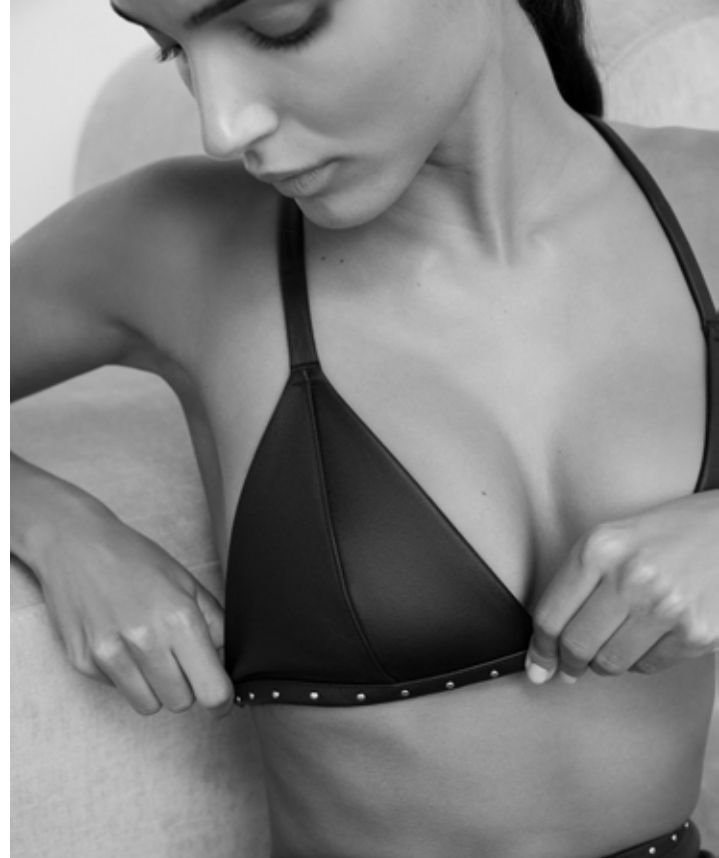
A TULLE FULLY EMBROIDERED WITH PEARLS AND SEQUINS, SHOWCASING THE HAUTE COUTURE SAVOIR-FAIRE OF FORSTER ROHNER, THE SWISS EMBROIDERY HOUSE SINCE 1904.





# NOTHING TO HIDE

LEATHER REDEFINES THE CODES OF LINGERIE IN THIS COUTURE LINE.





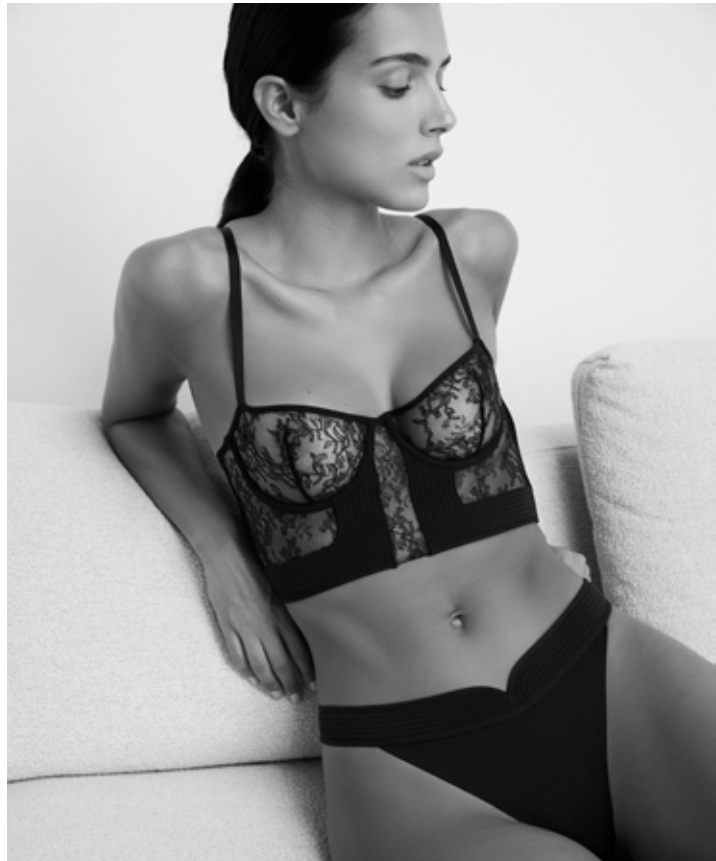


PRIVATE



## NIGHT FALL TEMPTATION

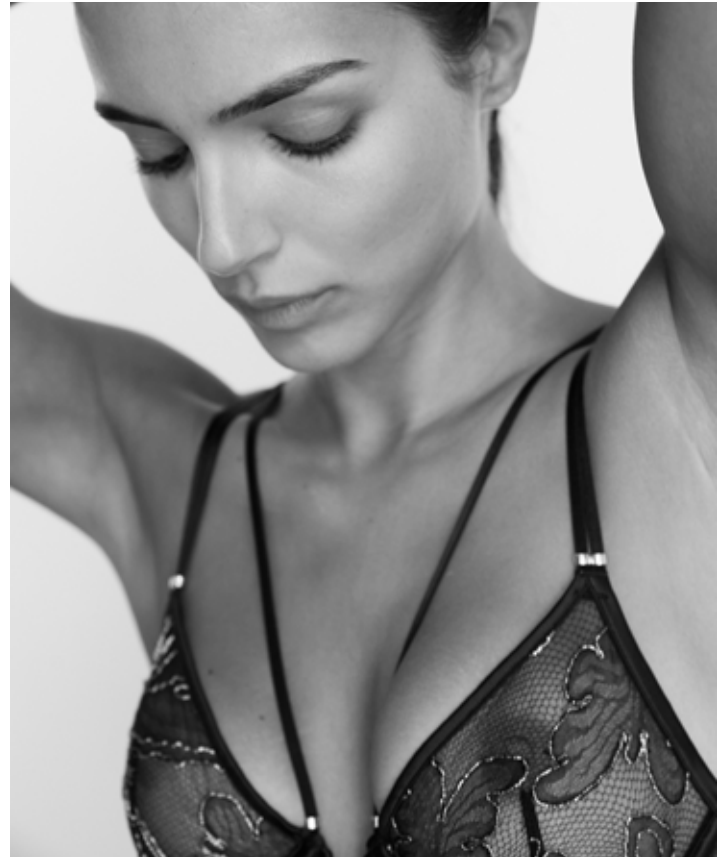
A LACE BY SOPHIE HALLETTE, THE FRENCH TULLE AND LACE HOUSE, REINVENTED WITH STRUCTURE AND TECHNICAL MASTERY.





## AFTER MIDNIGHT

AN EXCLUSIVE RE-EMBROIDERED LEAVERS LACE BY SOPHIE HALLETTE, THE FRENCH TULLE AND LACE HOUSE SINCE 1887.





## KEEP IT PRIVATE

AN EXCEPTIONAL LEAVERS LACE, WOVEN IN THE PUREST CALAIS CAUDRY® TRADITION BY THE FRENCH MAISON JEAN BRACQ.

